



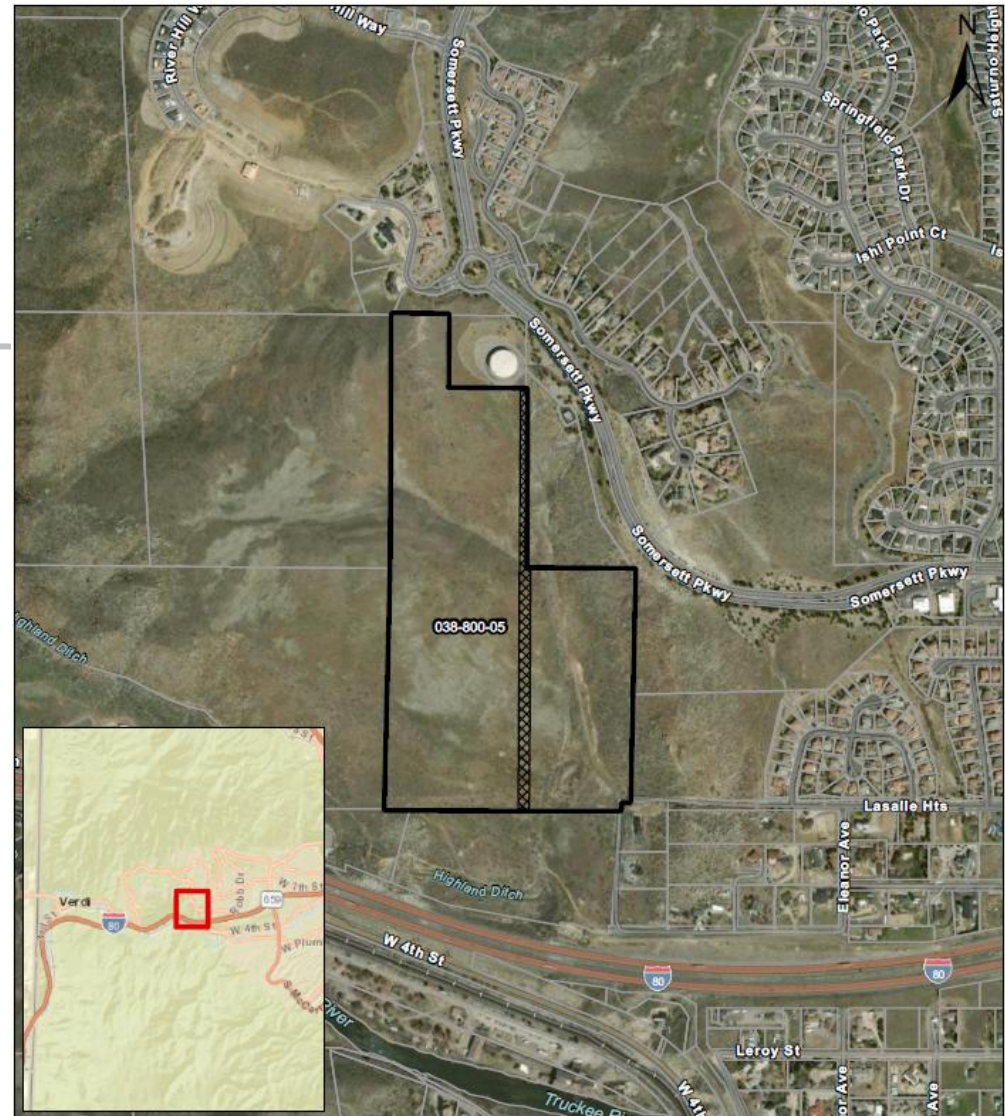
US40 Water Tank Parcel: Roadway Easement Abandonment

Planning Commission- October 7, 2025






PROJECT LOCATION

APN 038-800-085
Northwest of La Salle
Heights and Burks
Boulevard, southwest
of Sommersett
Parkway



Legend

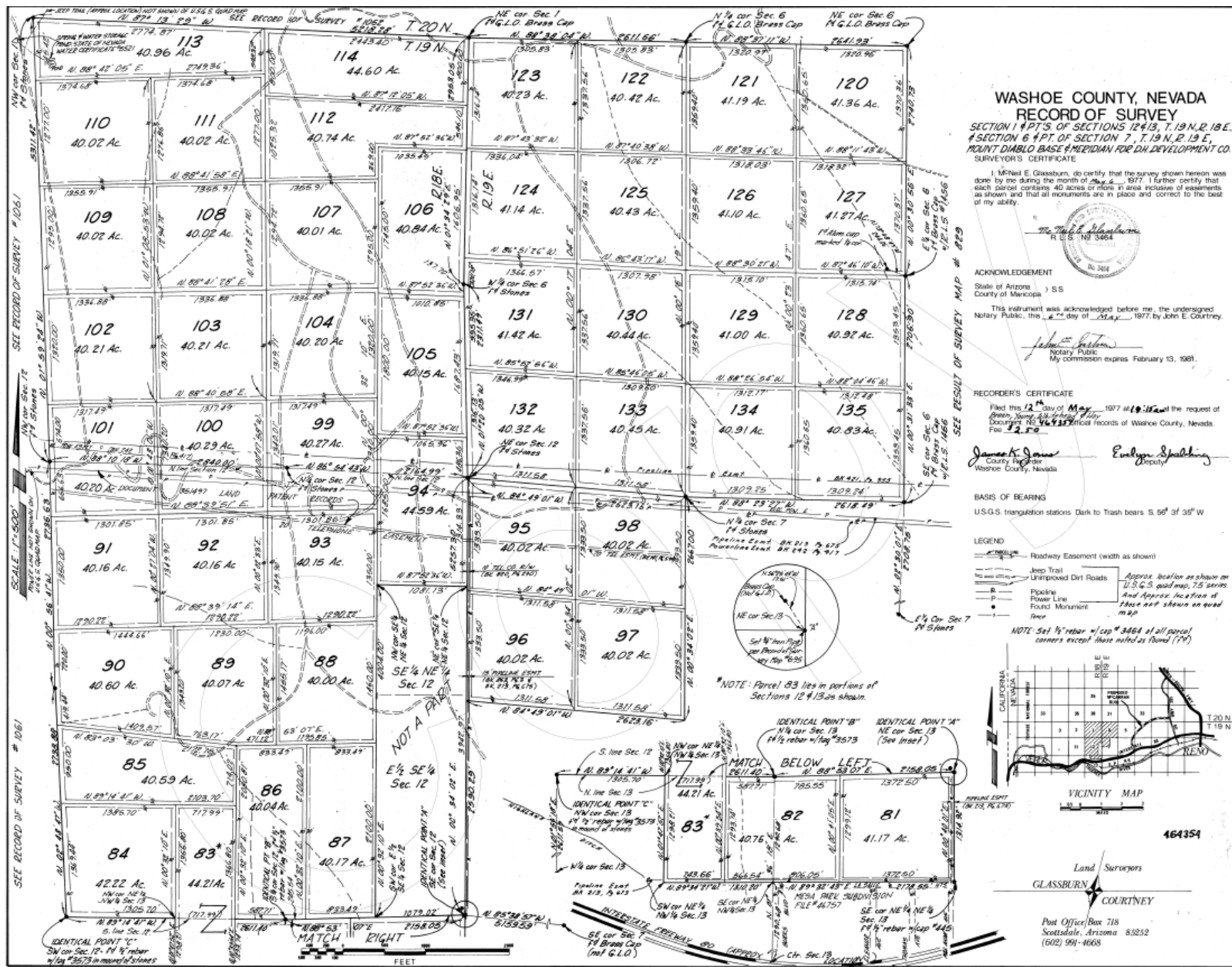
-  Abandonment Area
-  Subject Parcel
-  Parcel



REQUEST

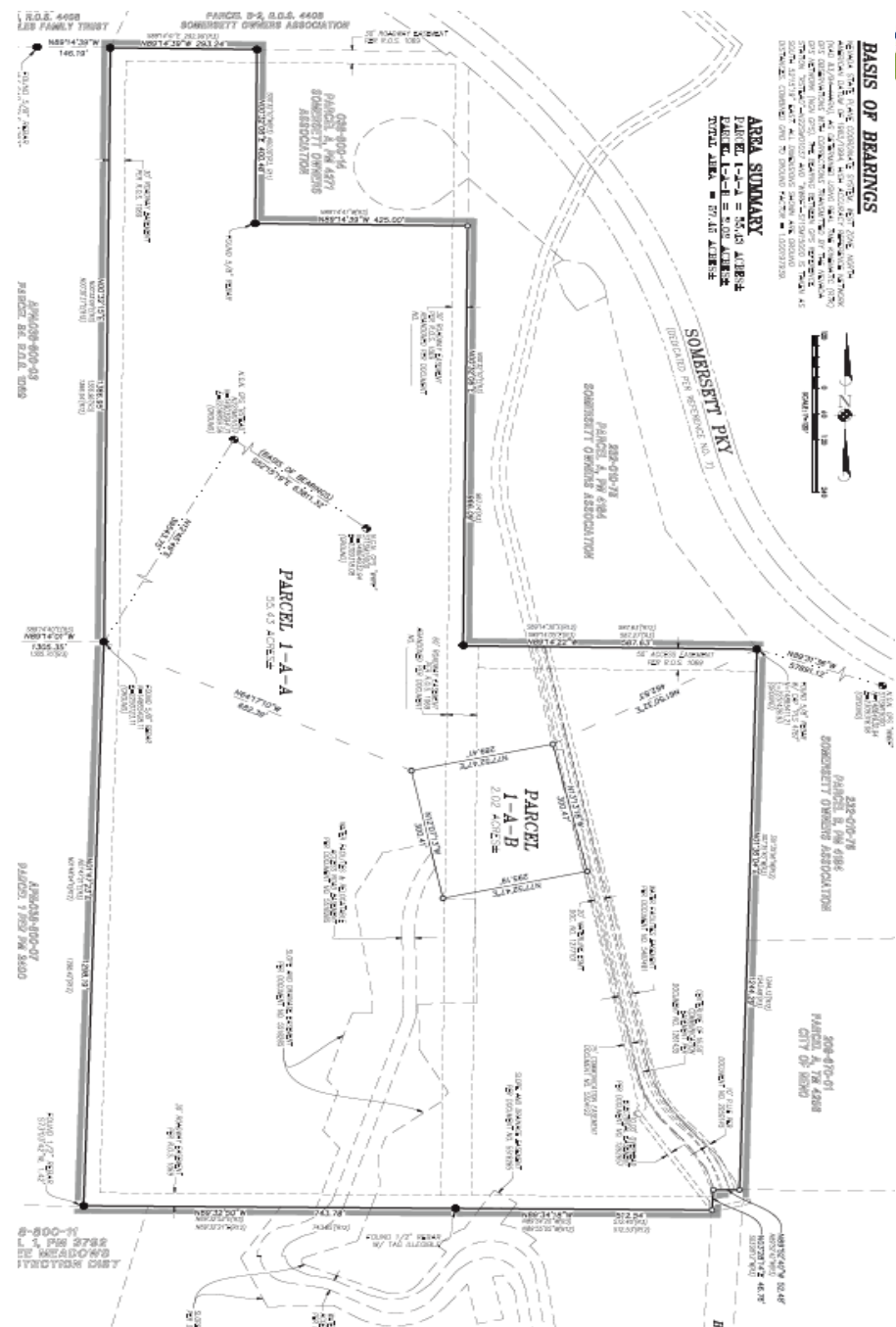
Abandonment of Roadway Easement

To allow for the recordation of a
Parcel Map for a previously-
approved water tank and access
road (LDC22-000004, TMWA
US40 Water Tank)

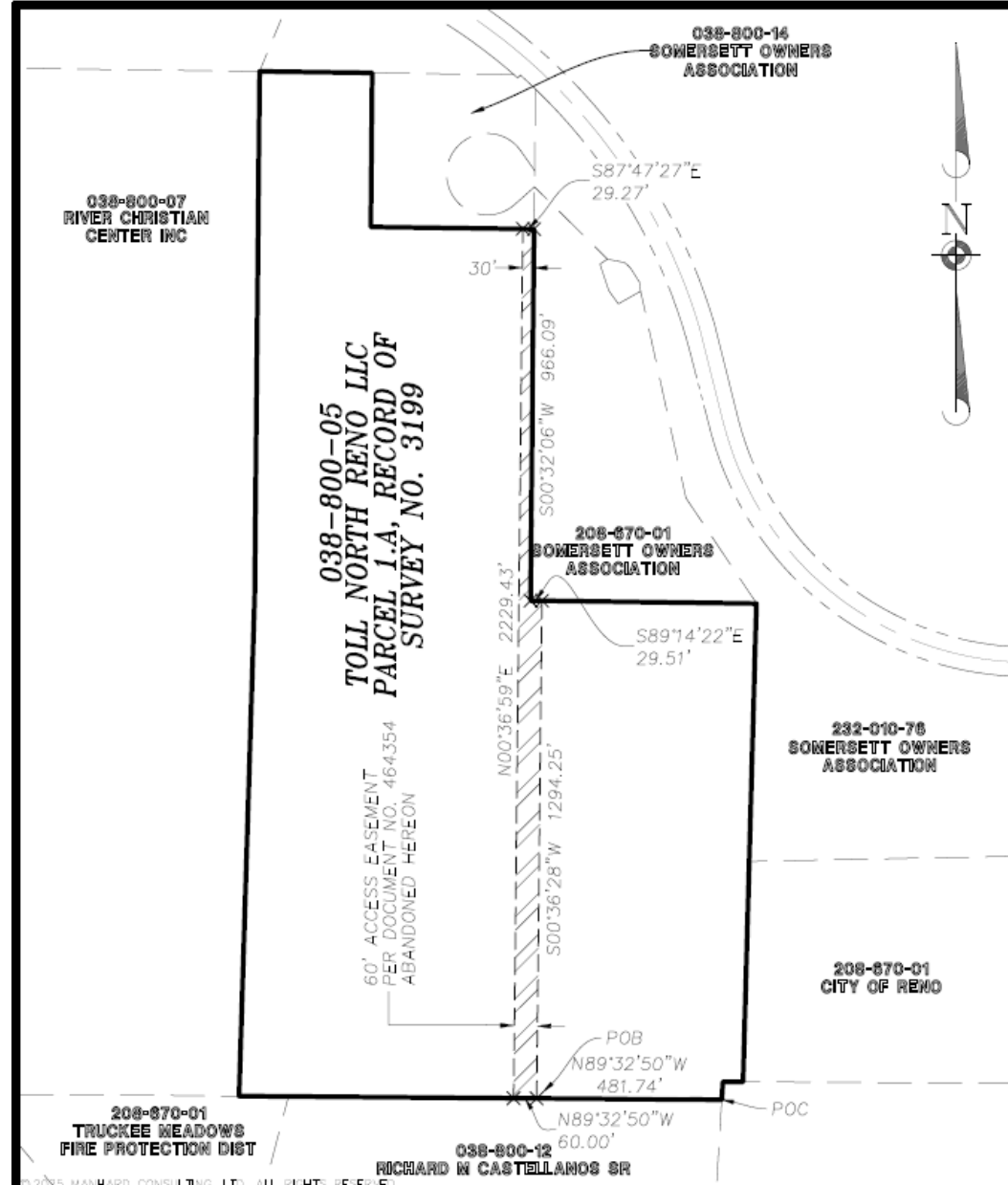




- Parcel Map



AREA OF ABANDONMENT



241 Ridge Street, Suite 400, Reno, NV 89501 ph:775.746.3500 fx:775.746.3520 www.manhard.com
Civil Engineers | Surveyors | Water Resource Engineers | Water & Waste Water Engineers
Construction Managers | Environmental Scientists | Landscape Architects | Planners

EXHIBIT A-1
ACCESS EASEMENT ABANDONMENT
RENO, NEVADA

PROJ. MGR.: LHS
DRAWN BY: MSR
DATE: JUNE 2025
SCALE: 1" = 300'

SHEET
1 OF **1**
SAN.RENV01



Roadway easements in the map area were never established.

The area is not developed.

The abandonment will not change the existing parcel configuration.

No feasible future use for the easement; 1) topography, 2) adjacent development (Somerset) has existing roadways.

No utilities in the abandonment area.

Q&A